

TrendLineAlert

Expert Trading System
For MetaTrader 4.0

User Manual

Copyright © 2006, iExpertAdvisor

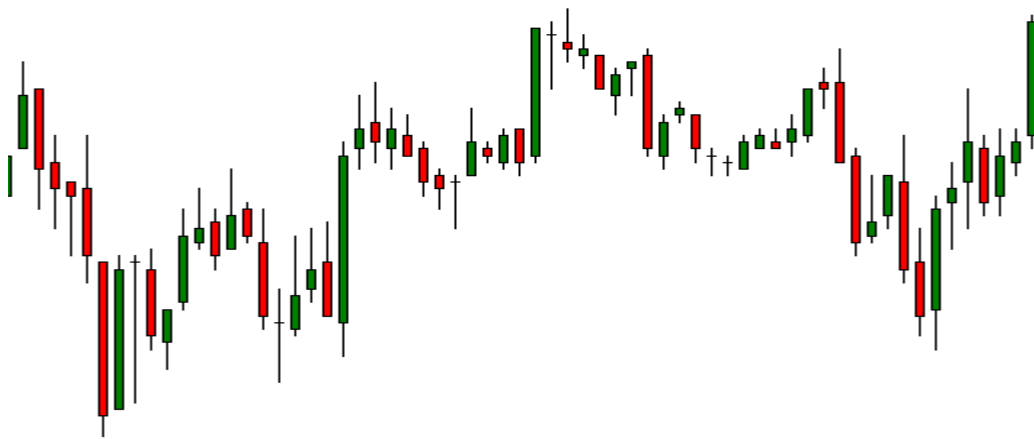


Table of Contents

Product Description.....	3
Platform Requirements	3
Installation Instructions	3
Product Usage.....	4
Configuring Email	4
Drawing Trendlines	6
TrendLineAlert Operation	8
Setting and Resetting TrendLineAlert	8
Creating Trendline Dependencies.....	12
Trendline Alerts	14

Product Description

TrendLineAlert is an Expert Advisor developed for the MetaTrader 4 trading platform. This Expert Advisor allows the trader to place custom trendlines on multiple charts. The *TrendLineAlert* Expert Advisor monitors each trendline and, if a trendline is breached, generates an alert. In addition, the trader may also be notified of the alert by email.

Platform Requirements

TrendLineAlert was built for the MetaTrader 4 trading platform. It will work with any brokers' MetaTrader 4 platform.

Installation Instructions

To load this strategy into your MetaTrader platform:

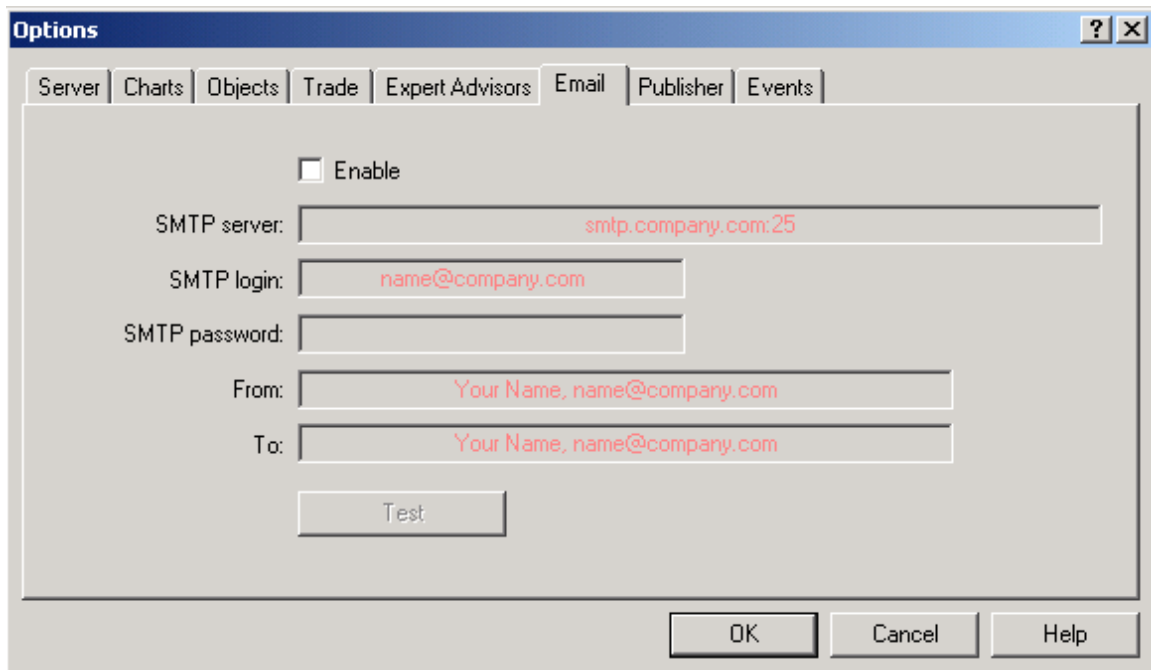
- Close the MetaTrader Platform.
- Copy the Expert Advisor to the following directory:
C:\Program Files*Platform Name*\Experts
Where the Platform Name may be InterBankFx, FxDD, etc.
- Restart the MetaTrader Platform.
- The Expert Advisor will now appear in the *Expert Advisors* folder in the *Navigator* window.

Product Usage

Configuring Email

TrendLineAlert will automatically send an email when an alert is generated if the emailing feature has been enabled on your MetaTrader platform.

To enable email, navigate to the **Tools->Options** menu, then select the **Email** tab to view the following window.



The screenshot shows the 'Options' dialog box with the 'Email' tab selected. The dialog has a title bar with a question mark and a close button. Below the title bar are several tabs: 'Server', 'Charts', 'Objects', 'Trade', 'Expert Advisors', 'Email', 'Publisher', and 'Events'. The 'Email' tab is active, displaying the following fields and controls:

- An 'Enable' checkbox, which is currently unchecked.
- An 'SMTP server:' text box containing the placeholder text 'smtp.company.com:25'.
- An 'SMTP login:' text box containing the placeholder text 'name@company.com'.
- An 'SMTP password:' text box, currently empty.
- A 'From:' text box containing the placeholder text 'Your Name, name@company.com'.
- A 'To:' text box containing the placeholder text 'Your Name, name@company.com'.
- A 'Test' button located below the 'To:' field.
- At the bottom of the dialog are three buttons: 'OK', 'Cancel', and 'Help'.

Check the **Enable** checkbox and fill in the required information. If you do not know the name of your SMTP server, request this information from your ISP (Internet Server Provider). After entering the information, select **OK** to enable emailing.

The following information is from the MetaTrader documentation:

Email Tab

In this tab, the electronic mailbox is set up. Later on, these settings will be used to send message by the expert advisor command or by a triggered alert. To start setting up of email, the "Enable" must be enabled and the following fields must be filled out:

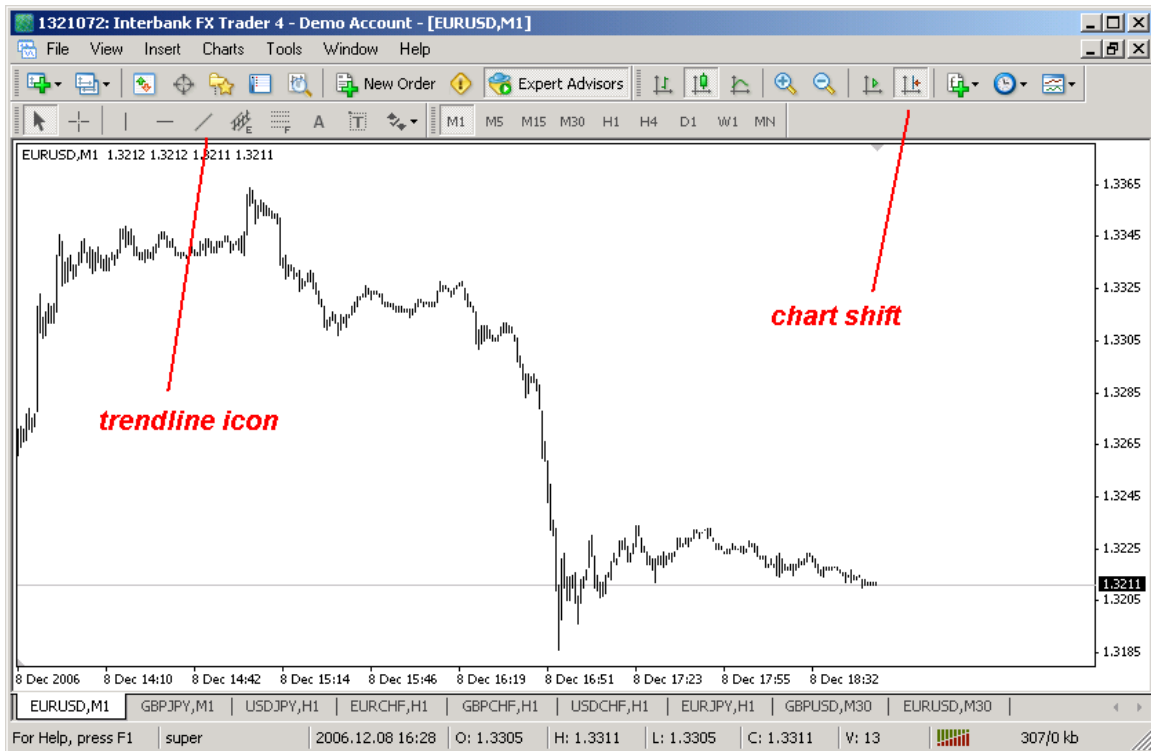
- **SMTP server** – address of the SMTP server used and port. The given server will be used for sending messages. The entry must have the following format "[internet address-server address]: [port number]". For example, "192.168.0.1:443", where "192.168.0.1" is the server address, and "443" is the port number;
- **SMTP login** – login to authorize at the mail server;
- **SMTP password** – authorization password;
- **From** – electronic mail address from which messages will be sent;
- **To** – electronic mail address to which messages will be sent.

Attention: Only one email address may be specified for either of fields "From" and "To". Several emails given with or without separators will not be accepted.

The "Test" sends a test message using the settings specified to test their workability. If it has been tested successfully, the "OK" button must be pressed to apply these settings. If test is unsuccessful, it is recommended to check all settings and resend the test message.

Drawing Trendlines

To draw a trendline on a MetaTrader chart, select *the trendline icon*, and use the mouse to draw the line on the chart. Note, the *chart shift* feature shifts the price chart to the left. This sometimes makes it easier to project a trendline past the latest candle.



The following picture illustrates a trendline drawn on the EURUSD 1 minute chart.



The trendline can be selected by double clicking on it. Once selected, the trendline can be deleted or modified. (This takes some practice to get used to, but once mastered it is very easy.)

Note: Be sure to reapply *TrendLineAlert* whenever you add, delete or reposition any trendlines.

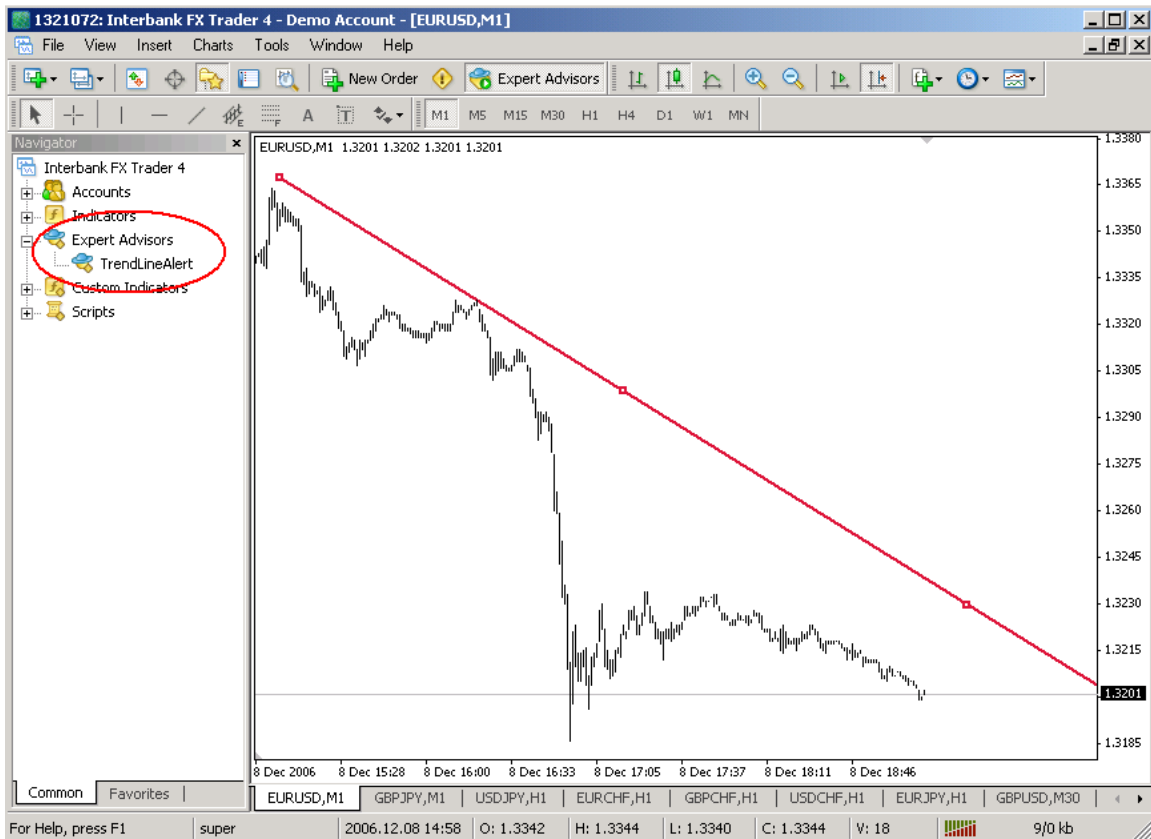
TrendLineAlert Operation

When *TrendLineAlert* is attached to a chart, it searches for trendlines on the chart. If any trendlines are found, the following occurs:

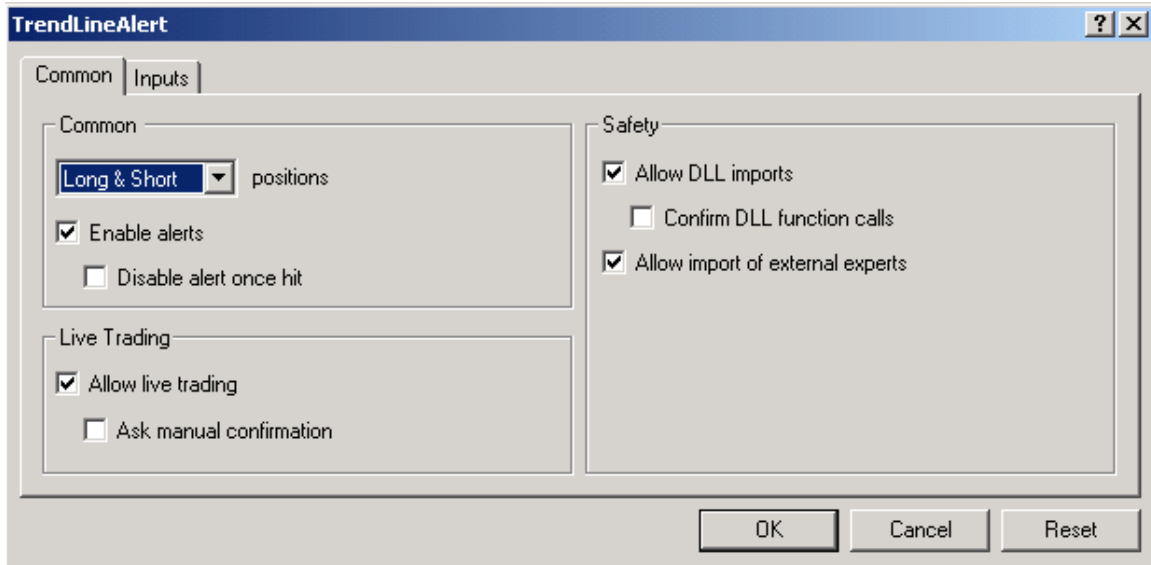
- *TrendLineAlert* names the trendline according to a standard convention.
- *TrendLineAlert* displays the trendline name on the chart.
- *TrendLineAlert* makes the trendline status available to other charts that are running *TrendLineAlert* on the platform.
- *TrendLineAlert* constantly monitors the trendline for a price breach.

Setting and Resetting TrendLineAlert

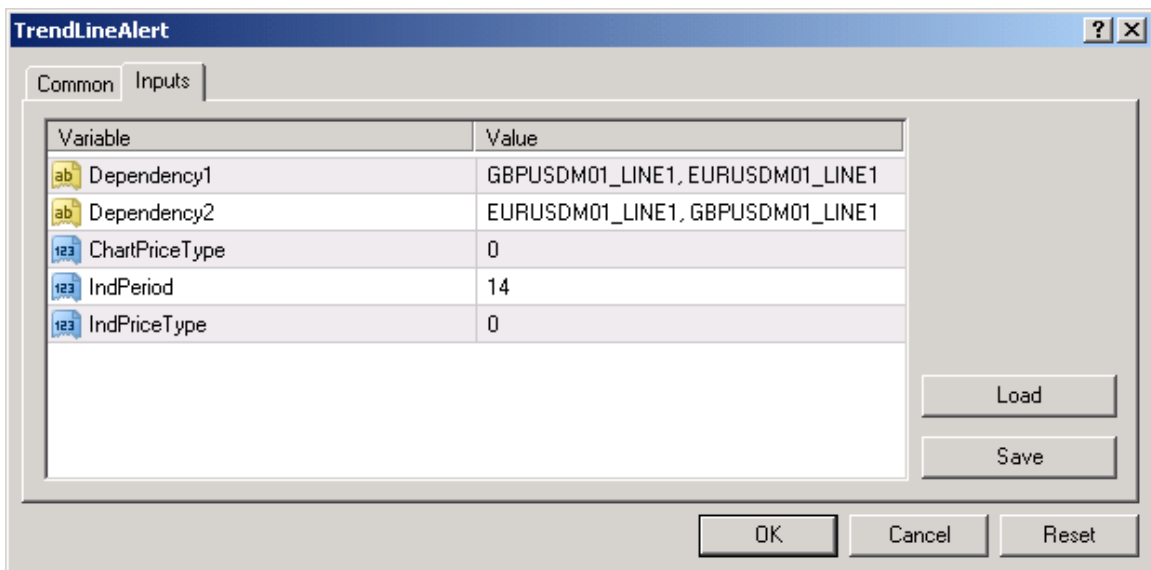
To attach *TrendLineAlert* to a chart, double click the *TrendLineAlert* name found under **Expert Advisor** in the **Navigator** window, while a price chart is open. This will attach *TrendLineAlert* to the currently selected chart.



When *TrendLineAlert* is started, the following window will appear.



Since *TrendLineAlert* does not open or close trades, the values found on the **Common** tab are not used. Select the **Inputs** tab to display the following window.

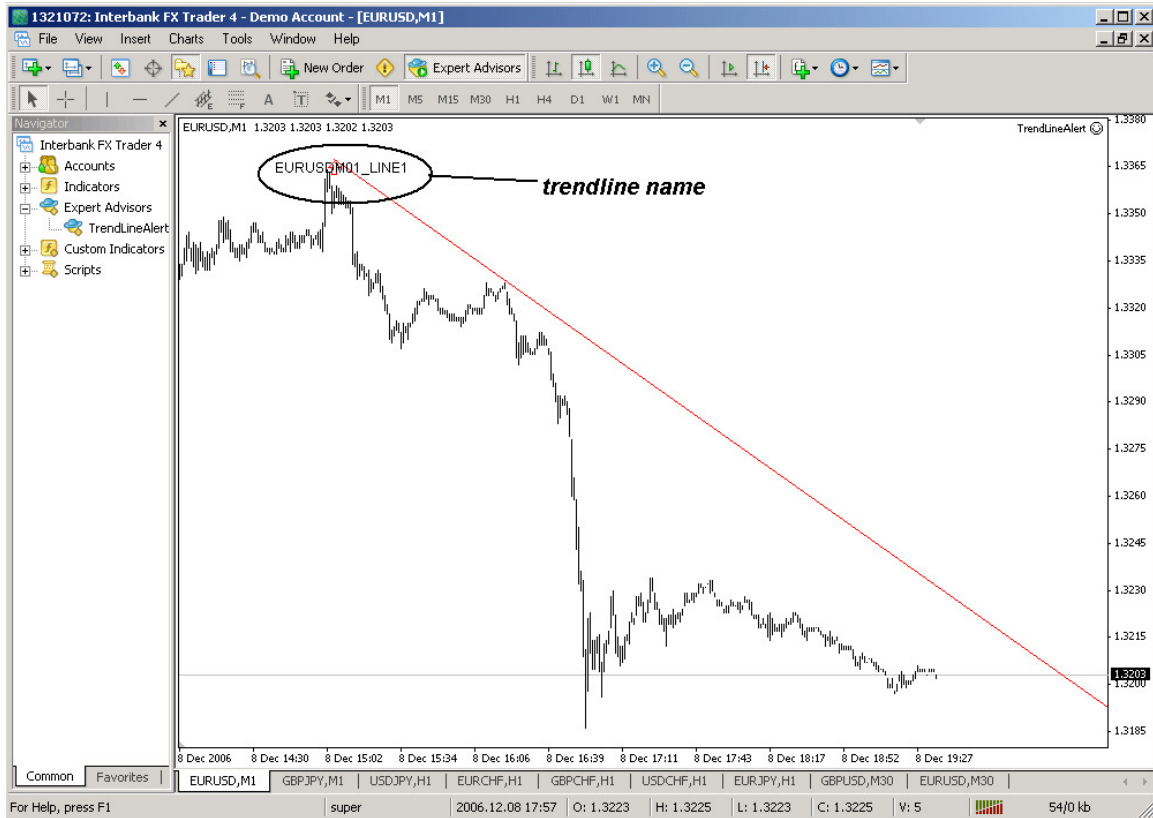


These are the input variables used to configure *TrendLineAlert*.

Input Name	Data Type	Default Value	Description
Dependency1	String of characters	none	This is a comma-separated pair of two trendline names . Both of these trendlines must be breached for an alert to be generated.
Dependency2	String of characters	none	This is a comma-separated pair of two trendline names . Both of these trendlines must be breached for an alert to be generated.
ChartPriceType	Integer	0	This is a numeric code for the price type to be tested against the trendline. The options are: 0 Close Price 1 Bid 2 Ask
IndPeriod	Integer	14	If a trendline is drawn on one of the supported indicator charts*, the variable must be set to the Period of the indicator.
IndPriceType	Integer	0	This is a numeric code for the price type of the Indicator. The options are: 0 Close price. 1 Open price. 2 High price. 3 Low price. 4 Median price, (high+low)/2. 5 Typical price, (high+low+close)/3. 6 Weighted close price, (high+low+close+close)/4.

* The supported indicators are RSI, Momentum, Bears, Bulls, ATR, and CCI.

After selecting OK, *TrendLineAlert* attaches to the chart and displays the name of the trendline.



The name of the trendline is the concatenation of the name of the chart window (usually the currency pair), the period of the chart, and the next available line number, starting at 1. As long as *TrendLineAlert* is attached to the chart, it will maintain the same name for each trendline. If *TrendLineAlert* is removed and reattached, it will rename the lines on the chart.

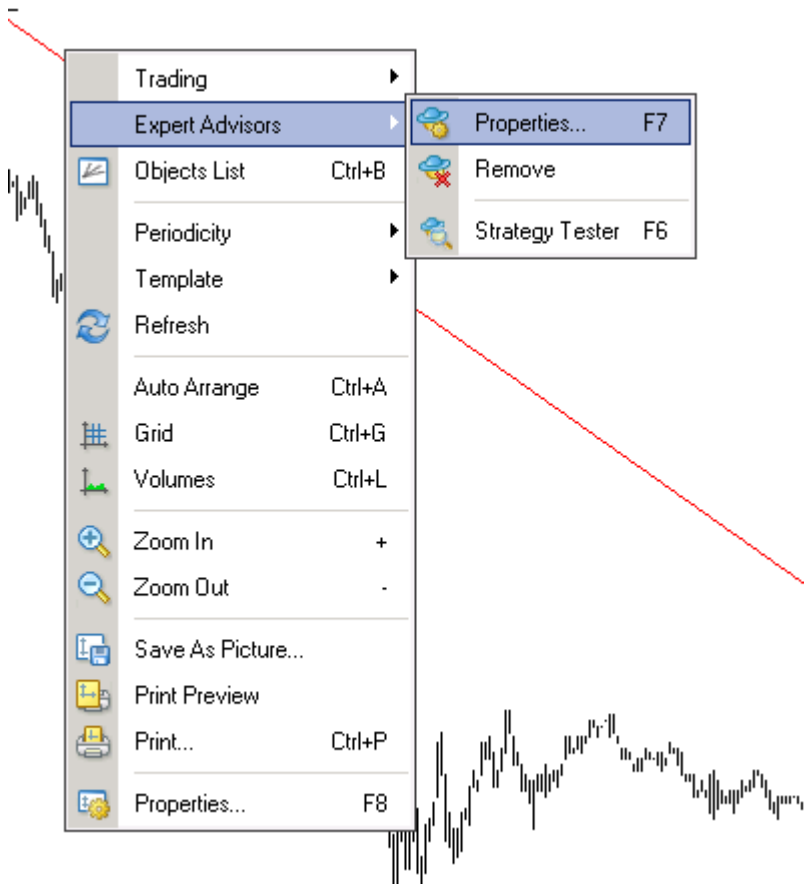
Creating Trendline Dependencies

Creating trendline dependencies is usually a two-step process. This is because it is usually easier to attach *TrendLineAlert* to a chart just to record the name of the trendline. The name is required to specify the dependency. You then enter the trendline names into the **Dependency1** or **Dependency2** input variables and reapply the Expert Advisor.

Note:

You must reapply *TrendLineAlert* whenever you add, delete or re-position any trendlines.

The Expert Advisor is **reapplied** after you select **OK** from the **Inputs** window. This window can be displayed by right clicking anywhere on a chart which *TrendLineAlert* is attached and selecting **Expert Advisors -> Properties**.



To create a dependency between a trendline on the GBPUSD chart and a trendline on the EURUSD chart, follow these steps.

- 1) Draw the trendline on the GBPUSD chart.
- 2) Attach *TrendLineAlert* to the GBPUSD chart.
- 3) Record the name of the trendline on the GBPUSD chart. It will be something like **GBPUSDM15_LINE1**.
- 4) Draw the trendline on the EURUSD chart.
- 5) Attach *TrendLineAlert* to the EURUSD chart.
- 6) Record the name of the trendline on the EURUSD chart. It will be something like **EURUSDM15_LINE1**.
- 7) From either chart, from the Expert Advisor *Inputs* window, enter the value for the variable **Dependency1** or **Dependency2** as:
GBPUSDM15_LINE1, EURUSDM15_LINE1
- 8) Select **OK** to reapply the Expert Advisor with the new input values.

Alert will be generated only when *both* trendlines are breached.

Trendline Alerts

When *TrendLineAlert* generates an alert, in addition to raising the alert and sending an email, *TrendLineAlert* will write the text of the alert on the price chart.

- ***TrendLineAlert* will only generate the alert once.**
- **To re-enable *TrendLineAlert*, the trendlines should be redrawn and the Expert Advisor must be re-applied.**

