



## Multi Trade Plug-in

Requires VTS-Connect minimum version **4.0.0.83**

The **Multi Trade Plug-in** allows an Expert Advisor to open an unlimited number of additional trades based on the profit or loss of a single trade.

### What is a Plug-in?

VTS stands for **Visual Traders Studio**.

The VTS *Expert Advisor* Builder is a Windows graphical application that enables non-programmers to build complex Expert Advisors by dragging, dropping and connecting logical elements.

The VTS application contains basic functionality to build almost any Expert Advisor.

A **VTS Plug-in** allows traders to easily implement advanced trading techniques using an add-on user interface.

## Contents

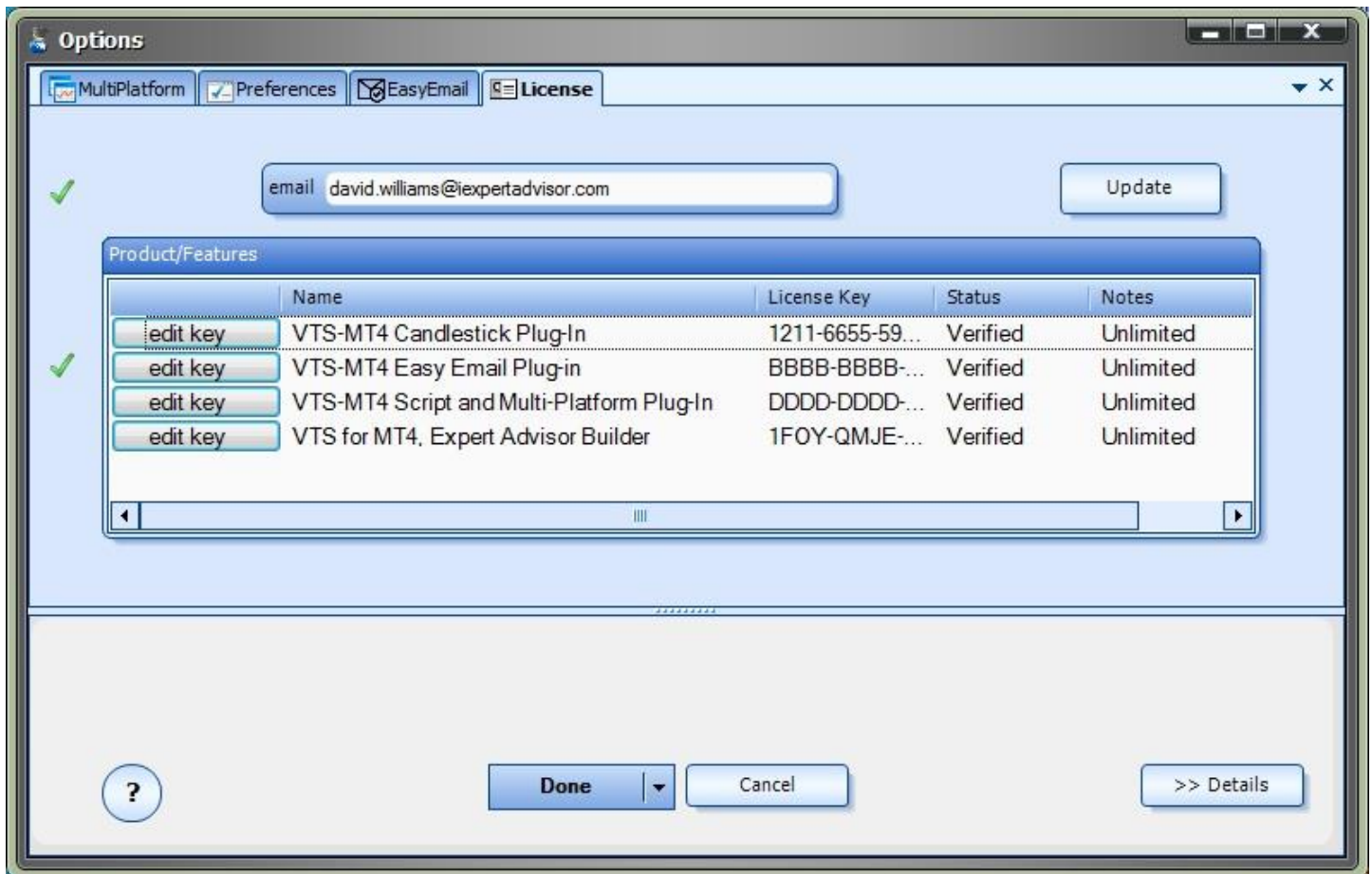
Enable the <i>Multi Trade</i> Plug-in .....	3
Multi Trade in the System Manager .....	4
Using the Multi Trade Plug-in .....	5
Configuring Multiple Trades for Buy Trades .....	6
Configuring Multiple Trades for Sell Trades .....	7
Expected Behaviour.....	7
Multi Trade on a MetaTrader Price Chart .....	8

## Enable the *Multi Trade Plug-in*

You must enter your License key to enable the **Multi Trade Plug-in**. Your license key for all of your VTS products can be found in the [Members Area](#).

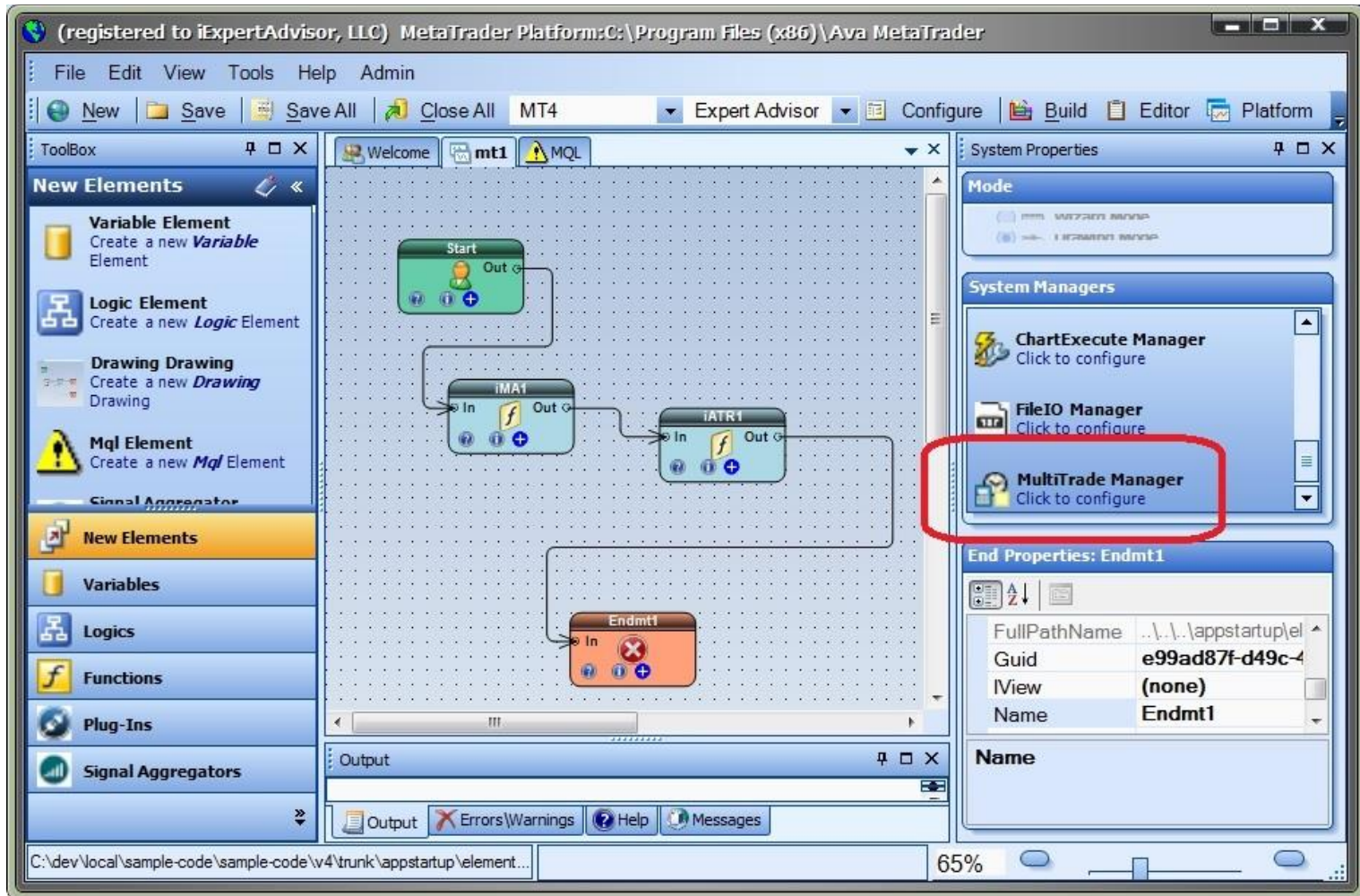
License keys are entered in Visual Traders Studio (VTS) from the License entry tab.

- The **email** address is the email address used to purchase [VTS](#).
- The **License Key** is the key listed in the Members Area.
- The **Update** button is used to verify the email address and license key.
- The **edit key** button is used to edit the key value.



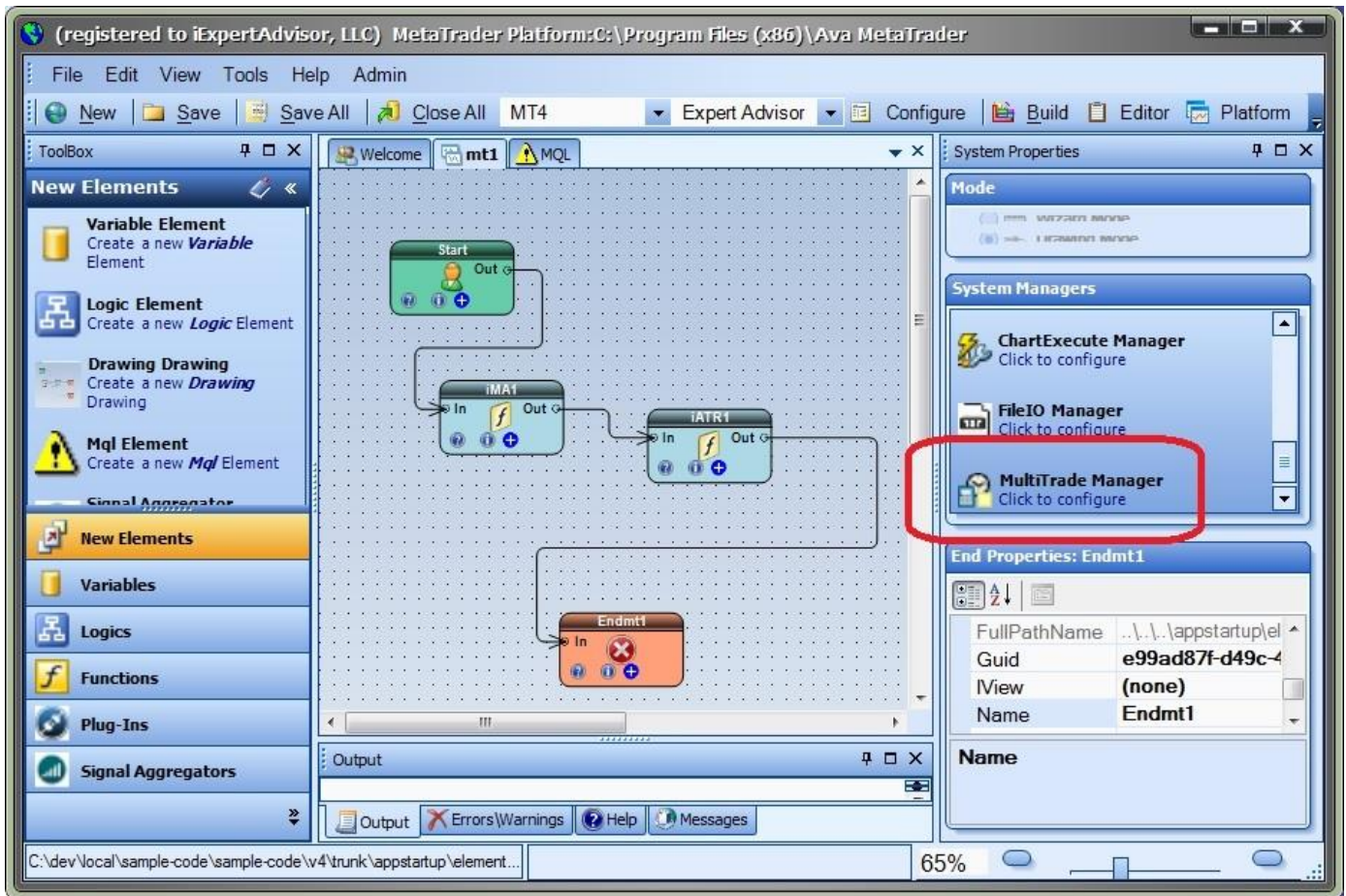
## Multi Trade in the System Manager

- **Multi Trade** configuration is accessed through the **Multi Trade System Manager**.
- **System Managers** are found on the right side of the VTS main application.
- Depending on your screen resolution, you may need to scroll down to view the **Multi Trade** icon.
- To open the **Multi Trade** Manager, double-click the icon.



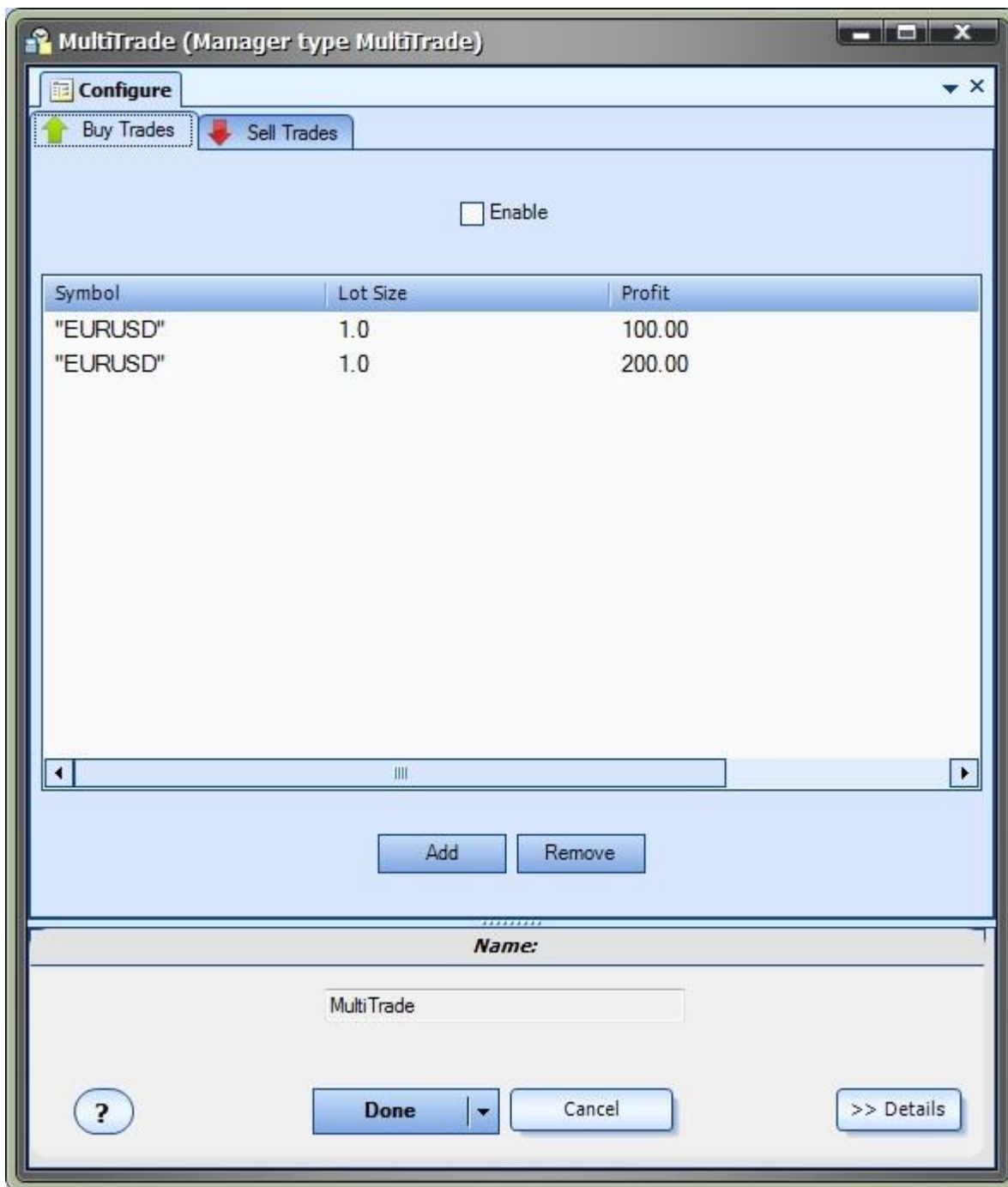
## Using the Multi Trade Plug-in

To open the Multi Trade Manager, click the icon in the System Manager:

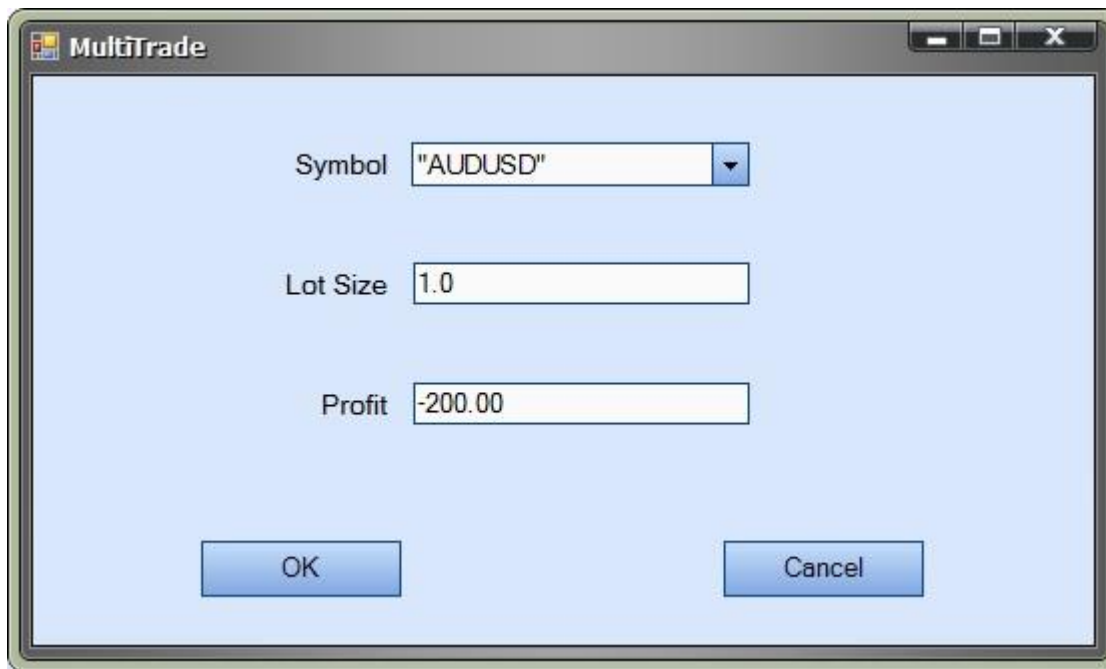


## Configuring Multiple Trades for Buy Trades

On the "Buy Trades" tab, check **Enable** to enable multiple trades:



Click the **Add** button to add a new multi-trade row:



The image shows a dialog box titled "MultiTrade". It contains three input fields: "Symbol" with a dropdown menu showing "AUDUSD", "Lot Size" with a text box containing "1.0", and "Profit" with a text box containing "-200.00". At the bottom of the dialog, there are two buttons: "OK" and "Cancel".

Select a **Symbol**, **Lot Size** and **Profit**.

- **Symbol** can be manually entered if the desired symbol is not shown.
- **Lot** size can be any valid lot size, either smaller or larger than the original lot size. If the entered lot size is not valid, the EA will attempt to change the size to the nearest valid size.
- **Profit** can be any decimal value, positive or negative. The rows will be sorted by the profit value.

To edit an existing row, select and double-click the row.

To remove a row, select the row and click **Remove**. If no row is selected, the last row will be removed.

### Configuring Multiple Trades for Sell Trades

To configure Sell trades, click on the "Sell Trades" tab and follow the same steps as "Buy Trades".

### Expected Behaviour

- The Multi Trade manager will monitor the profit of the original trade.
- The original trade is the trade with a magic number equal to the extern variable [MagicNumber](#)
- Note: to manage a manually opened trade, set [MagicNumber](#) to 0 (zero)
- On each tick, the profit (or loss) is checked against the settings in the Multi Trade Manager
- If the profit is greater than or equal to any of the rows in the Multi Trade Manager, the defined-trade is opened for the defined lot size.
- If the loss is less than or equal to any of the rows in the Multi Trade Manager, the defined-trade is opened for the defined lot size.

**NOTE:** A trade is only opened once per EA run. However, if the EA is removed and reattached to the chart, the trade/s will be reopened.

All trades are opened using the stoploss and takeprofit values of the extern variables StopLoss and TakeProfit. The [Profit Manager](#) is recommended to be used to close the set of trades.

## Multi Trade on a MetaTrader Price Chart

This price chart shows two buy trades and three sell trades configured to open on different profit levels.

